
T2,5 (podziałka 2,5mm)
T2,5 (2,5mm pitch)

Typ Code	Liczba zębów No Teeth	Dp	De	L
T2,5-10	10	7,96	7,44	90
T2,5-12	12	9,55	9,03	90
T2,5-13	13	10,35	9,83	90
T2,5-14	14	11,14	10,62	90
T2,5-15	15	11,94	11,42	90
T2,5-16	16	12,73	12,21	90
T2,5-17	17	13,53	13,01	90
T2,5-18	18	14,32	13,80	90
T2,5-19	19	15,12	14,60	90
T2,5-20	20	15,92	15,40	90
T2,5-21	21	16,71	16,19	90
T2,5-22	22	17,51	16,99	90
T2,5-23	23	18,30	17,78	90
T2,5-24	24	19,10	18,58	90
T2,5-25	25	19,89	19,37	90
T2,5-26	26	20,69	20,17	90
T2,5-27	27	21,49	20,97	90
T2,5-28	28	22,28	21,76	90
T2,5-29	29	23,08	22,56	125
T2,5-30	30	23,87	23,35	125
T2,5-32	32	25,46	24,95	125
T2,5-34	34	27,06	26,54	125
T2,5-35	35	27,85	27,33	125
T2,5-36	36	28,65	28,13	125
T2,5-38	38	30,24	29,72	125
T2,5-40	40	31,83	31,31	125
T2,5-42	42	33,42	32,90	125
T2,5-44	44	35,01	34,50	125
T2,5-45	45	35,81	35,29	125
T2,5-48	48	38,20	37,68	140
T2,5-50	50	39,79	39,27	140
T2,5-60	60	47,75	47,23	140
T2,5-65	65	51,73	51,21	160
T2,5-70	70	55,70	55,19	160
T2,5-72	72	57,30	56,78	160
T2,5-90	90	71,62	71,10	160
T2,5-100	100	79,58	79,06	160

Aluminium

T5 (podziałka 5mm)
T5 (5mm pitch)

Typ Code	Liczba zębów No Teeth	Dp	De	L
T5-10	10	15,92	15,09	90
T5-11	11	17,51	16,68	90
T5-12	12	19,10	18,27	90
T5-13	13	20,69	19,86	90
T5-14	14	22,28	21,45	90
T5-15	15	23,87	23,04	125
T5-16	16	25,46	24,64	125
T5-17	17	27,06	26,23	125
T5-18	18	28,65	27,82	125
T5-19	19	30,24	29,41	125
T5-20	20	31,83	31,00	125
T5-21	21	33,42	32,59	125
T5-22	22	35,01	34,19	125
T5-23	23	36,61	35,78	125
T5-24	24	38,20	37,37	140
T5-25	25	39,79	38,96	140
T5-26	26	41,38	40,55	140
T5-27	27	42,97	42,14	140
T5-28	28	44,56	43,73	140
T5-29	29	46,15	45,33	140
T5-30	30	47,75	46,92	140
T5-32	32	50,93	50,10	160
T5-34	34	54,11	53,28	160
T5-35	35	55,70	54,88	160
T5-36	36	57,30	56,47	160
T5-37	37	58,89	58,06	160
T5-38	38	60,48	59,65	160
T5-40	40	63,66	62,83	160
T5-42	42	66,85	66,02	160
T5-44	44	70,03	69,20	160
T5-45	45	71,62	70,79	160
T5-46	46	73,21	72,38	160
T5-48	48	76,39	75,57	160
T5-50	50	79,58	78,75	160
T5-60	60	95,49	94,67	160
T5-64	64	101,86	101,03	160
T5-72	72	114,59	113,76	160
T5-80	80	127,32	126,50	160
T5-90	90	143,24	142,41	160
T5-100	100	159,15	158,33	160

Aluminium

T10 (podziałka 10mm)
T10 (10 mm pitch)

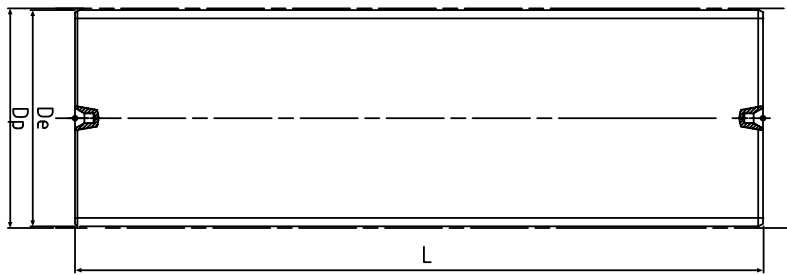
Typ Code	Liczba zębów No Teeth	Dp	De	L
T10-10	10	31,83	29,98	125
T10-11	11	35,01	33,17	125
T10-12	12	38,20	36,35	140
T10-13	13	41,38	39,53	140
T10-14	14	44,56	42,71	140
T10-15	15	47,75	45,90	140
T10-16	16	50,93	49,08	140
T10-17	17	54,11	52,26	160
T10-18	18	57,30	55,45	160
T10-19	19	60,48	58,63	160
T10-20	20	63,66	61,81	160
T10-21	21	66,85	65,00	160
T10-22	22	70,03	68,18	160
T10-23	23	73,21	71,36	160
T10-24	24	76,39	74,55	160
T10-25	25	79,58	77,73	160
T10-26	26	82,76	80,91	160
T10-27	27	85,94	84,10	160
T10-28	28	89,13	87,28	160
T10-30	30	95,49	93,65	160
T10-32	32	101,86	100,01	160
T10-34	34	108,23	106,38	160
T10-36	36	114,59	112,74	160
T10-38	38	120,96	119,11	160
T10-40	40	127,32	125,48	160
T10-45	45	143,24	141,39	160
T10-48	48	152,79	150,94	160
T10-60	60	190,99	189,14	160
T10-72	72	229,18	227,34	160

Aluminium / Stal / Steel

T20 (podziałka 20 mm)
T20 (20 mm pitch)

Typ Code	Liczba zębów No Teeth	Dp	De	L
T20-18	18	114,59	111,73	160
T20-19	19	120,96	118,10	160
T20-20	20	127,33	124,47	160
T20-21	21	133,69	130,83	160
T20-22	22	140,06	137,20	160
T20-23	23	146,43	143,57	160
T20-24	24	152,79	149,93	160
T20-25	25	159,16	156,30	160
T20-26	26	165,53	162,67	160
T20-28	27	178,26	175,40	160
T20-30	30	190,99	188,13	160

Aluminium / Stal / Steel


AT5 (podziałka 5mm)
AT5 (5 mm pitch)

Typ Code	Liczba zębów No Teeth	Dp	De	L
AT5-12	10	19,10	17,87	90
AT5-13	13	20,69	19,46	90
AT5-14	14	22,28	21,05	90
AT5-15	15	23,87	22,64	125
AT5-16	16	25,46	24,24	125
AT5-17	17	27,06	25,83	125
AT5-18	18	28,65	27,42	125
AT5-19	19	30,24	29,01	125
AT5-20	20	31,83	30,60	125
AT5-21	21	33,42	32,19	125
AT5-22	22	35,01	33,79	125
AT5-23	23	36,61	35,38	125
AT5-24	24	38,20	36,97	140
AT5-25	25	39,79	38,56	140
AT5-26	26	41,38	40,15	140
AT5-27	27	42,97	41,74	140
AT5-28	28	44,56	43,33	140
AT5-29	29	46,15	44,93	140
AT5-30	30	47,75	46,52	140
AT5-31	31	49,34	48,11	140
AT5-32	32	50,93	49,70	140
AT5-34	34	54,11	52,88	160
AT5-35	35	55,70	54,48	160
AT5-36	36	57,30	56,07	160
AT5-38	38	60,48	59,25	160
AT5-40	40	63,65	62,43	160
AT5-42	42	66,85	65,62	160
AT5-44	44	70,03	68,80	160
AT5-45	45	71,62	70,39	160
AT5-46	46	73,21	71,98	160
AT5-48	48	76,39	75,17	160
AT5-50	50	79,58	78,35	160
AT5-60	60	95,49	94,27	160
AT5-64	64	101,86	100,63	160
AT5-72	72	114,59	113,36	160

AT10 (podziałka 10mm)
AT10 (10mm pitch)

Typ Code	Liczba zębów No Teeth	Dp	De	L
AT10-15	15	47,75	45,90	140
AT10-16	16	50,93	49,08	140
AT10-17	17	54,11	52,26	160
AT10-18	18	57,30	55,45	160
AT10-19	19	60,48	58,63	160
AT10-20	20	63,66	61,81	160
AT10-21	21	66,85	65,00	160
AT10-22	22	70,03	68,18	160
AT10-23	23	73,21	71,36	160
AT10-24	24	76,39	74,55	160
AT10-25	25	79,58	77,73	160
AT10-26	26	82,76	80,91	160
AT10-27	27	85,94	84,10	160
AT10-28	28	89,13	87,28	160
AT10-29	29	92,31	90,46	160
AT10-30	30	95,49	93,65	160
AT10-32	32	101,86	100,01	160
AT10-34	34	108,23	106,38	160
AT10-35	35	111,41	109,56	160
AT10-36	36	114,59	112,74	160
AT10-38	38	120,96	119,11	160
AT10-40	40	127,32	125,48	160
AT10-42	42	133,69	131,84	160
AT10-44	44	140,06	138,21	160
AT10-45	45	143,24	141,39	160
AT10-48	48	152,79	150,94	160
AT10-52	52	165,53	163,68	160
AT10-60	60	190,99	189,14	160

AT 20 (podziałka 20 mm)
AT20 (20 mm pitch)

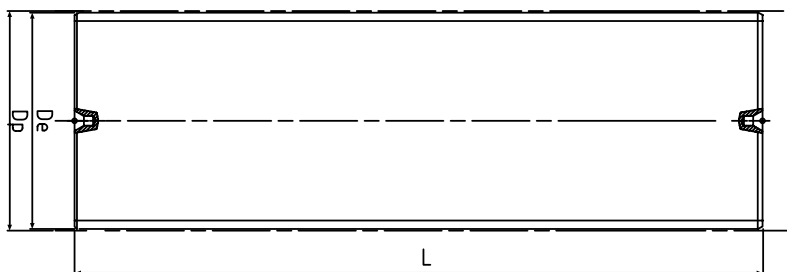
Typ Code	Liczba zębów No Teeth	Dp	De	L
AT20-18	18	114,59	111,73	160
AT20-19	19	120,96	118,10	160
AT20-20	20	127,32	124,47	160
AT20-21	21	133,69	130,83	160
AT20-22	22	140,06	137,20	160
AT20-23	23	146,42	143,57	160
AT20-24	24	152,79	149,93	160
AT20-25	25	159,15	156,30	160
AT20-26	26	165,52	162,67	160
AT20-28	28	178,25	175,40	160
AT20-30	30	190,99	188,13	160

Aluminium / Stal / Steel

Aluminium / Stal / Steel

Aluminium / Stal / Steel




MXL (podziałka 2,032 mm)
MXL (2,032 mm pitch)

Typ Code	Liczba zębów No Teeth	Dp	De	L
MXL-10	10	6,47	5,96	90
MXL-11	11	7,11	6,61	90
MXL-12	12	7,76	7,25	90
MXL-13	13	8,41	7,90	90
MXL-14	14	9,06	8,55	90
MXL-15	15	9,70	9,19	90
MXL-16	16	10,35	9,84	90
MXL-17	17	11,00	10,49	90
MXL-18	18	11,64	11,13	90
MXL-19	19	12,29	11,78	90
MXL-20	20	12,94	12,43	90
MXL-21	21	13,58	13,07	90
MXL-22	22	14,23	13,72	90
MXL-23	23	14,88	14,37	90
MXL-24	24	15,52	15,01	90
MXL-25	25	16,17	15,66	90
MXL-26	26	16,82	16,31	90
MXL-27	27	17,46	16,95	90
MXL-28	28	18,11	17,60	90
MXL-29	29	18,76	18,25	90
MXL-30	30	19,40	18,89	90
MXL-32	32	20,70	20,19	90
MXL-34	34	21,99	21,48	90
MXL-35	35	22,64	22,13	125
MXL-36	36	23,29	22,78	125
MXL-38	38	24,58	24,07	125
MXL-40	40	25,87	25,36	125
MXL-42	42	27,17	26,66	125
MXL-44	44	28,46	27,95	125
MXL-45	45	29,11	28,60	125
MXL-48	48	31,05	30,54	125
MXL-50	50	32,34	31,83	125
MXL-60	60	38,81	38,30	140
MXL-64	64	41,40	40,89	140
MXL-65	65	42,04	41,53	140
MXL-70	70	45,28	44,77	140
MXL-72	72	46,57	46,06	140
MXL-75	75	48,51	48,00	160
MXL-90	90	58,21	57,70	160
MXL-110	110	71,15	70,64	160

Aluminium ↴

XL (podziałka 5,08 mm)
XL (5,08 mm pitch)

Typ Code	Liczba zębów No Teeth	Dp	De	L
XL-10	10	16,17	15,66	90
XL-11	11	17,79	17,28	90
XL-12	12	19,40	18,89	90
XL-13	13	21,02	20,51	90
XL-14	14	22,64	22,13	125
XL-15	15	24,26	23,75	125
XL-16	16	25,87	25,36	125
XL-17	17	27,49	26,98	125
XL-18	18	29,11	28,60	125
XL-19	19	30,72	30,21	125
XL-20	20	32,34	31,83	125
XL-21	21	33,96	33,45	125
XL-22	22	35,57	35,07	125
XL-23	23	37,19	36,68	140
XL-24	24	38,81	38,30	140
XL-25	25	40,43	39,92	140
XL-26	26	42,04	41,53	140
XL-27	27	43,66	43,15	140
XL-28	28	45,28	44,77	140
XL-29	29	46,89	46,38	140
XL-30	30	48,51	48,00	140
XL-32	32	51,74	51,24	160
XL-33	33	53,36	52,85	160
XL-34	34	54,98	54,47	160
XL-35	35	56,60	56,09	160
XL-36	36	58,21	57,70	160
XL-38	38	61,45	60,94	160
XL-39	39	63,06	62,56	160
XL-40	40	64,68	64,17	160
XL-41	41	66,30	65,79	160
XL-42	42	67,91	67,41	160
XL-43	43	69,53	69,02	160
XL-44	44	71,15	70,64	160
XL-45	45	72,77	72,26	160
XL-48	48	77,62	77,11	160
XL-50	50	80,85	80,34	160
XL-52	52	84,08	83,58	160
XL-56	56	90,55	90,05	160
XL-60	60	97,02	96,51	160
XL-64	64	103,49	102,98	160
XL-72	72	116,43	115,92	160

Aluminium / Stal / Steel ↴

L (podziałka 9,525 mm)
L (9,525 mm pitch)

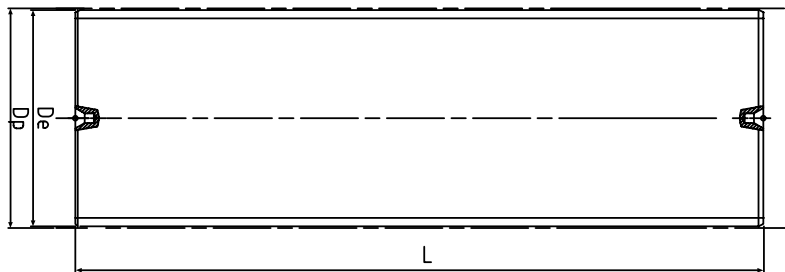
Typ Code	Liczba zębów No Teeth	Dp	De	L
L-10	10	30,32	29,55	125
L-11	11	33,35	32,58	125
L-12	12	36,38	35,61	125
L-13	13	39,41	38,65	140
L-14	14	42,45	41,68	140
L-15	15	45,48	44,71	140
L-16	16	48,51	47,74	140
L-17	17	51,54	50,77	160
L-18	18	54,57	53,81	160
L-19	19	57,61	56,84	160
L-20	20	60,64	59,87	160
L-21	21	63,67	62,90	160
L-22	22	66,70	65,93	160
L-23	23	69,73	68,97	160
L-24	24	72,77	72,00	160
L-25	25	75,80	75,03	160
L-27	27	81,86	81,09	160
L-28	28	84,89	84,13	160
L-30	30	90,96	90,19	160
L-32	32	97,02	96,25	160
L-36	36	109,15	108,38	160
L-40	40	121,28	120,51	160

Aluminium / Stal / Steel ↴

H (podziałka 12,7 mm)
H (12,7 mm pitch)

Typ Code	Liczba zębów No Teeth	Dp	De	L
H-14	14	56,60	55,22	160
H-15	15	60,64	59,26	160
H-16	16	64,68	63,30	160
H-17	17	68,72	67,35	160
H-18	18	72,77	71,39	160
H-19	19	76,81	75,43	160
H-20	20	80,85	79,47	160
H-21	21	84,89	83,52	160
H-22	22	88,94	87,56	160
H-23	23	92,98	91,60	160
H-24	24	97,02	95,64	160
H-25	25	101,06	99,69	160
H-26	26	105,11	103,73	160
H-27	27	109,15	107,77	160
H-28	28	113,19	111,81	160
H-30	30	121,28	119,90	160
H-32	32	129,36	127,98	160
H-34	34	137,45	136,07	160
H-36	36	145,53	144,16	160
H-40	40	161,70	160,33	160

Aluminium / Stal / Steel ↴


3M (podziałka 3mm)
3M (3mm pitch)

Typ Code	Liczba zębów No Teeth	Dp	De	L
3M-10	10	9,55	8,79	90
3M-11	11	10,50	9,74	90
3M-12	12	11,46	10,70	90
3M-13	13	12,41	11,65	90
3M-14	14	13,37	12,61	90
3M-15	15	14,32	13,56	90
3M-16	16	15,28	14,52	90
3M-17	17	16,23	15,47	90
3M-18	18	17,19	16,43	90
3M-19	19	18,14	17,38	90
3M-20	20	19,10	18,34	90
3M-21	21	20,05	19,29	90
3M-22	22	21,01	20,25	90
3M-23	23	21,96	21,20	90
3M-24	24	22,92	22,16	125
3M-25	25	23,87	23,11	125
3M-26	26	24,83	24,07	125
3M-28	28	26,74	25,98	125
3M-30	30	28,65	27,89	125
3M-32	32	30,56	28,80	125
3M-34	34	32,47	31,71	125
3M-36	36	34,38	33,62	125
3M-38	38	36,29	35,53	125
3M-40	40	38,20	37,44	140
3M-42	42	40,11	39,35	140
3M-45	45	42,97	42,21	140
3M-48	48	45,84	45,08	140
3M-60	60	57,30	56,54	160
3M-72	72	68,75	68,00	160

Aluminium

5M (podziałka 5mm)
5M (5mm pitch)

Typ Code	Liczba zębów No Teeth	Dp	De	L
5M-12	12	19,10	17,96	90
5M-13	13	20,69	19,55	90
5M-14	14	22,28	21,14	90
5M-15	15	23,87	22,73	125
5M-16	16	25,46	24,33	125
5M-17	17	27,06	25,92	125
5M-18	18	28,65	27,51	125
5M-19	19	30,21	29,10	125
5M-20	20	31,83	30,69	125
5M-21	21	33,42	32,28	125
5M-22	22	35,01	33,88	125
5M-23	23	35,61	35,47	125
5M-24	24	38,20	37,06	140
5M-26	26	41,38	40,24	140
5M-27	27	42,97	41,83	140
5M-28	28	44,56	43,42	140
5M-30	30	47,75	46,61	140
5M-32	32	50,93	49,79	140
5M-34	34	54,11	52,97	160
5M-36	36	57,30	56,16	160
5M-38	38	60,48	59,34	160
5M-40	40	63,66	62,52	160
5M-42	42	66,85	65,71	160
5M-44	44	70,03	68,89	160
5M-45	45	71,62	70,48	160
5M-48	48	76,39	75,26	160
5M-50	50	79,58	78,44	160
5M-60	60	95,49	94,36	160
5M-72	72	114,59	113,45	160

Aluminium / Stal / Steel

8M (podziałka 8mm)
8M (8mm pitch)

Typ Code	Liczba zębów No Teeth	Dp	De	L
8M-18	18	45,84	44,47	140
8M-19	19	48,38	47,01	140
8M-20	20	50,93	49,56	140
8M-21	21	53,48	52,11	160
8M-22	22	56,02	54,65	160
8M-23	23	58,57	57,20	160
8M-24	24	61,12	59,75	160
8M-25	25	63,66	62,29	160
8M-26	26	66,21	64,84	160
8M-27	27	68,75	67,39	160
8M-28	28	71,30	69,93	160
8M-29	29	73,85	72,48	160
8M-30	30	76,39	75,03	160
8M-32	32	81,49	80,12	160
8M-34	34	86,58	85,21	160
8M-35	35	89,13	87,76	160
8M-36	36	91,67	90,31	160
8M-38	38	96,77	95,40	160
8M-40	40	101,86	100,49	160

Aluminium / Stal / Steel

